

The Method for Measuring Loop Resistance in Gas Insulated Substation

Li Zhou*, Tiecheng Lu, Bo Zhang, Guangkai Yu, Jiawei Wan

School of Electrical Engineering, Wuhan University, CHINA,

7 Teaching Building, 202 Room, School of Electrical Engineering, Wuhan University, Luojia Hill,
Wuchang District, Wuhan 430072, Hubei, China

*Corresponding author, e-mail: 2010282070205@whu.edu.cn

Abstract

This paper studies the method for measuring the loop resistance of GIS conductor pole basing on the super capacitor producing impulse current up to several thousand amperes. This method overcomes the limitations of conventional diagnostic method. Typical GIS conductor poles are chosen. Based on FEA and lab tests, the effect of different forms of current and contact condition, relationship between the temperature of contact and the loop resistance is researched. In full-scale testing under realistic operating conditions on the new 220kV GIS using prototype instrumentation a very good sensitivity in an early stage was obtained.

Keywords: contact resistance, contacts, impact current, gas insulated substation

Copyright © 2014 Institute of Advanced Engineering and Science. All rights reserved.

1. Introduction

In the operation of power system, gas insulated substation (GIS) conductor pole insertion depth is not enough under the procession of installation, thus the surface of contact produces oxide film and burr. It causes the loop resistance of GIS conductor pole increases and leads to the temperature of contact increases. In addition, the temperature of contact increases causes the loop resistance of GIS conductor pole further increases. When case gets serious, it will influence the operated safety of power system. So accurately measuring the loop resistance of GIS is necessary.

Although the conventional diagnostic method, such as the method of dc voltage drop has stable current and can greatly simplifies the resistance measurements. It rated for kiloamperes tend to become very bulky and expensive, so dc excitation is not found to be a viable option [1-6].

The studying method for measuring the loop resistance of GIS conductor pole is based on the super capacitor produce kiloamperes impulse current. Similar to four-point resistance measurements, the method relies on testing passing electric currents through the section and recording the associated voltage drops. The feasibility of method and the accuracy of results are verified by experiment.

Based on the analysis of typical GIS conductor pole, a thermal model of contactor is proposed in this paper. The temperature distribution of the GIS conductor pole was achieved by FEM simulation and the results were proved by experiments. The effect of the different forms of current and different contact condition of contact on the temperature of contact are researched. Furthermore, the relationship between the temperature of contact surface and the loop resistance of GIS conductor pole are analyzed.

2. Resistance Measurement

The proposed method for measuring the loop resistance of GIS conductor pole is based on the impulse current. The super capacitor, standard resistance and tests components constitute second-order circuit of non oscillation and produce kA-level impulse current. The peak current and the corresponding voltage drop of the GIS conductor pole are used to get the

loop resistance, in order to eliminate the impact of the inductance on the measurement result [7-9].

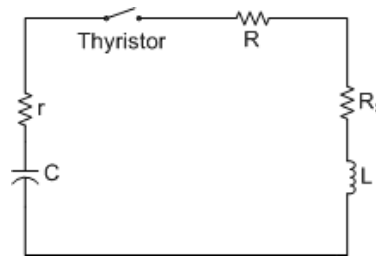


Figure 1. The Main Discharge Circuit Equivalent Circuit

The relationship between voltage drop and current across the GIS section are determined by the Equation (1).

$$u(t) = R(i,t)i(t) + L \frac{di(t)}{dt}. \tag{1}$$

Where R and L are the resistance and inductance, respectively, of the part of the circuit between the voltage probes, see Figure 1.

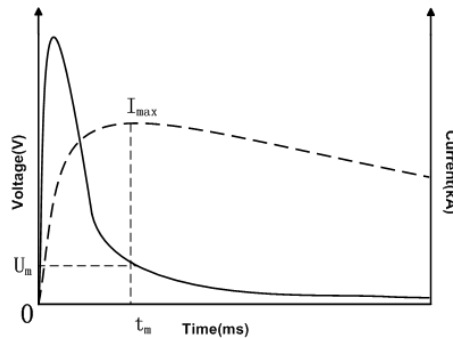


Figure 2. Voltage Drop Measured across a GIS Section (solid line) when a Current Pulse (broken line) is Passed Through

As can be seen from Figure 2, the derivative of the current is large and positive in the first milliseconds, the inductive part of voltage drop is significantly greater than the resistive part. When the current has its maximum value, di/dt equals zero and the voltage drop is purely resistive.

$$\frac{u(n)}{i(n)} = R(n) + L \frac{i(n+1) - i(n)}{i(n)\Delta t}. \tag{2}$$

Where C represents the super capacitor, R is the total circuit resistance including super capacitor resistance, wire resistance, shunt resistance and the measured GIS conductive pole loop resistance, and L is inductance of GIS conductor pole.

Having determined L, the inductive part of the voltage drop is calculated and then subtracted from $u(n)$ for all n. By dividing this result with $i(n)$, a time series $R(n)$ being the resistance of the GIS section, is found.

$R(n)$ is, however, not constant, due to variations in the current penetration depth. In order to avoid this source of error, the resistance value from a measurement is always taken as the value found at the same point of the current pulse, namely, as the current pulse is at its peak value.

Thus, a section of a GIS is examined by passing current pulses of different magnitudes, calculating the resistance when the current pulse is at its peak value each time. And, as described earlier, if the resistance varies, this indicates that one or more of the contacts has too high of a resistance.

3. Modeling and Simulation

3.1. Physics of Heat Sources

In the FEM thermal-electrical coupled simulation analysis, make the following assumptions to facilitate the calculation [10].

In order to find the electrical resistance at the main contacts, the radius a_e of the elastically deformed contact area is expressed by:

$$a_e = \sqrt[3]{\frac{3}{4} F_k \left(\frac{1-\mu_1^2}{E_1} + \frac{1-\mu_2^2}{E_2} \right) \left(\frac{1}{r_1} + \frac{1}{r_2} \right)^{-1}}. \quad (3)$$

Where F_k is the contact force, E_i and μ_i are the moduli of elasticity and the Poisson's ratios, respectively, and r_i are radii of the spherical members in contact. The radius a_e is then used to calculate the contact resistance.

$$R_k = \frac{\bar{\rho}}{2a_e}. \quad (4)$$

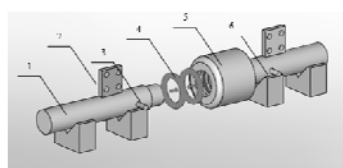
According to Holm's ellipsoid model. The average specific electrical resistivity of the two different materials in contact is denoted by $\bar{\rho}$.

It is known that the impact of heating is considered in the resistance changes. Therefore the temperature dependent term: where α is coefficient of resistivity, ΔT is temperature difference.

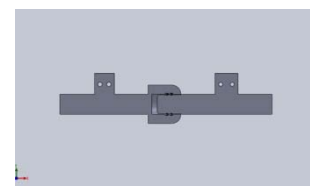
$$R_k = R_{k0} \left(1 + \frac{2}{3} \alpha \Delta T \right). \quad (5)$$

An applied current flowing in the electrically conducting path causes Joule heat $P = RI^2$ to be generated. This heat increases the temperature of the conducting parts. Due to the resulting temperature differences, heat is transported by means of conduction, convection and radiation.

3.2. Simulation Model



a) physical model



b) simulation model

Figure 3. Typical GIS Conductor Pole Model

Choose typical spring conductive connector as simulation model, it contacts by spring deformation on every point of contact pressure, ensure the contact well. As shown in Figure 3(a), where the material of No.1-No.3 and No.5 is aluminum, the material of No.4 is copper, and the material of No.6 is insulating. In this model, completely insertion depth is 55mm, as shown in Figure 3(b).

3.3. Result of Simulation

3.3.1. Different forms of current

Through the formula calculate the contact resistance of GIS conductor pole that contact well. According to the basis of the experiment measured the impulse current (current amplitude is 2424A, time is 1s). In the same conditions of current amplitude and duration, GIS conductor pole can be used for thermal simulation. Figure 4 shows the temperature is effected of dc slightly greater than the impact current.

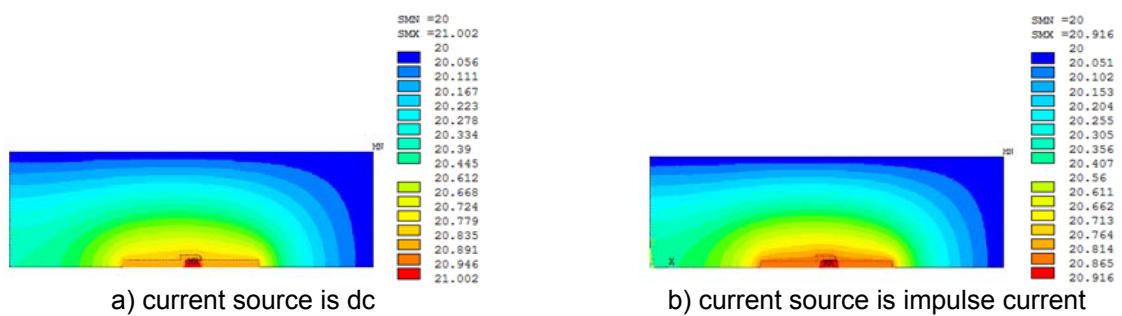


Figure 4. Calculation Results of the Temperature of Different Forms of Current

3.3.2. Different Contact Condition

Through the formula calculate the contact resistance of different contact condition. Under the conditions of impulse current, GIS conductor pole can be used for thermal simulation. Figure 5 shows the temperature is higher when the contact condition is worse.

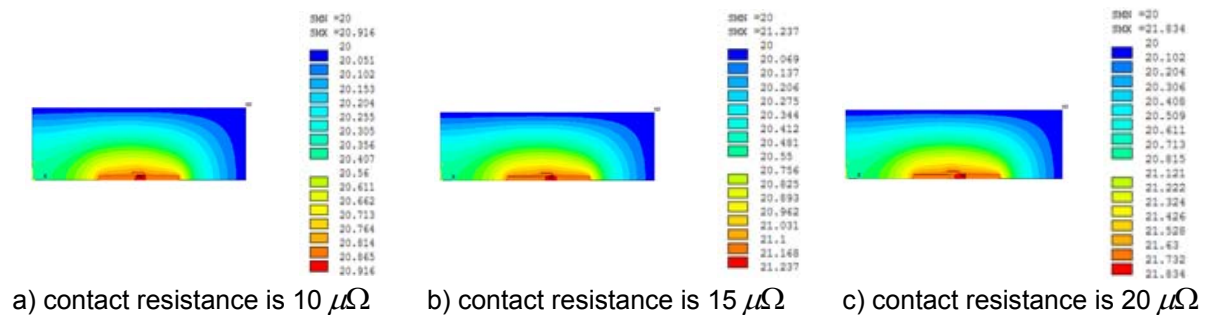


Figure 5. Calculation Results of the Temperature of Different Contact Condition

4. Experiment Tests

4.1. Laboratory Tests

Table 1 shows different test methods of measuring GIS conductor pole that contact well. Two methods of testing have the stability of test results. What's more the results are basically identical. It is means that two methods of measuring are accurate. Furthermore, the result of temperature is a little influence, due to the amplitude of dc is not large; as well as the amplitude of impact current is large but the time of duration is short, so as the temperature is.

The results also proved the correctness of the simulation calculation. The prototypical instrumentation, shown in Figure 6, is built to verify the feasibility of this method.

Table 1. Different Test Method of Measuring Resistance

current source is dc		current source is impulse current	
current(A)	resistance($\mu\Omega$)	current(A)	resistance($\mu\Omega$)
100	16.10	1000	15.98
200	16.15	1500	15.99
300	16.23	2000	15.91
400	16.27	2500	16.00
500	16.30	3000	16.06

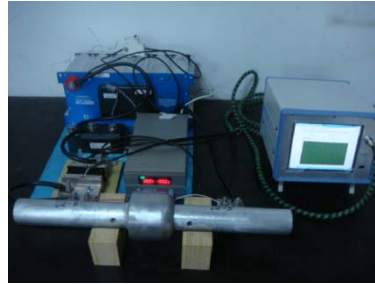


Figure 6. Prototypical Instrumentation

Table 2 shows different test methods of measuring GIS conductor pole under different contact conditions. The result of dc voltage drop haven't changed much. It shows that under the condition is bad, the conventional diagnostic method can't find the defect of GIS conductor pole. However, the result of the contact resistance increases along with the rising of the test current in the method of impact current voltage drop. It means that this method can response the contact condition of GIS conductor pole effectively.

Table 2. Different Test Method of Measuring GIS Conductor Pole under Different Contact Condition

current source is dc		current source is impulse current	
insertion depth (mm)	resistance($\mu\Omega$)	insertion depth (mm)	resistance($\mu\Omega$)
55	16.25	55	16.01
50	16.43	50	17.43
45	17.55	45	18.55
40	18.17	40	19.17
35	18.53	35	22.53
30	18.55	30	24.55
25	18.58	25	27.58

4.2. Full-Scale Tests

During the comprehensive laboratory measurements as well as full-scale tests under realistic conditions on GISs installed in 220kV grids, a few results will be presented in this section.

Table 3. Different Test Method of Measuring Resistance

current(A)	resistance($\mu\Omega$)
1000	256.52
1500	256.89
2000	257.03
2500	257.43
3000	257.63
3500	257.87

Table 3 shows resistance values measured on a new 220kV GIS by applying current pulses with peak values up to around 3.5kA. The resistances in this section are the same for all currents within standard deviations of 0.5%. Hence the contacts in this section show no signs of aging.

Tests have also carried out on an 8-m-long laboratory mockup of a GIS conductor section consisting of two concentric aluminum tubes of 50 and 10cm diameters. The total resistance was increased to approximately 300 $\mu\Omega$ by adding a short stainless steel section. A somewhat poor contact (around 40 $\mu\Omega$) made by partially unscrewing the bolts was inserted in the circuit. Figure 7 shows resistance plotted as a function of current when 9 current pulses of varying amplitude were passed through this model simulating a GIS section with a poor contact. Resistances obtained when current pulses of different amplitudes were passed through a model of a GIS containing a poor contact. The resistance increases with increasing currents indicating that the contact spots become significantly heated at high currents.

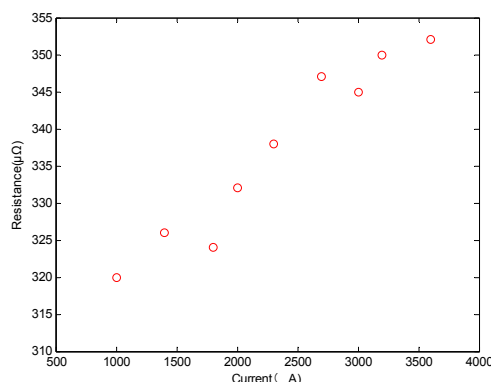


Figure 7. Resistances Obtained when Current were Passed Through GIS Containing a Poor Contact

5. Conclusion

The following conclusions can be drawn from this paper.

This method can not only provide excitation currents up to several kiloamperes, but also can make the device of portable. What's more, it can accurately measure the loop resistance of GIS conductor pole.

Through the simulation results proved that when GIS conductor pole contacts well, the variation of temperature is not obvious. However when GIS conductor pole contacts bad, the temperature is higher when the contact condition is worse.

Through experiment results proved that when GIS conductor pole has a good contact, two methods of testing can accurately measure resistance. However when GIS conductor pole has a poor contact, the method of impact current voltage drop can be used to detect contact degradation in GIS at an early stage.

References

- [1] Magne Runde, Odd Lillevik, Vegard Larsen. Condition Assessment of Contacts in Gas-Insulated Substations. *IEEE Transactions on Power Delivery*. 2004; 19(2): 609-617.
- [2] H Fujinami, T Takuma, T Kawamoto. Development of detection method with a magnetic field sensor for incomplete contacts in gas insulated switches and bus connecting parts. *IEEE Trans. Power Delivery*. 1995; 10(1): 229-236.
- [3] Michel Landry, Olivier Turcotte, Fouad Brikci A. Complete Strategy for Conducting Dynamic Contact Resistance Measurements on HV Circuit Breakers. *IEEE Transactions on Power Delivery*. 2008; 23(2): 710-716.
- [4] A Matasuzawa. Low-Voltage and Low-Power Circuit Design for Mixed Analog/Digital System in Portable Equipment. *IEEE Journal of Solid State Circuits*. 1994: 140-145.
- [5] Gamby J, Taberna PL, Simon P, et al. Studies and Characterizations of various activated Carbons used for Carbon/Carbon Supercapacitors. *Journal of Power Sources*. 2001: 109-116.

-
- [6] Shengyi Liu, Dougal RA. *Design and analysis of a Current-mode controlled battery/ultra-capacitor hybrid*. Conference Record of the 2004 IEEE Industry Applications Conference. 2004; 28(2): 1140-1145.
 - [7] Haryono V, Sirait K, Tumiran, Berahim, Hamzah. *The Computer Simulation for High Amplitude Impulse Current Design*. International Conference on High Voltage Engineering and Application. 2008; 18(5): 207-210.
 - [8] Johal H. *Coil Current Analysis Method for Predictive Maintenance of Circuit Breakers*. Transmission and Distribution Conference and Exposition, 2008: 140-145.
 - [9] Yongpeng Meng. *The Detection of the Closing Moments of a Vacuum Circuit Breaker by Vibration Analysis*. *IEEE Transactions on Power Delivery*. 2006; 21(2): 652-658.
 - [10] Monzel C, Henneberger G. *Temperature solver for highly nonlinear ferromagnetic materials for thin moving sheets in transversal flux induction heating*. *IEEE Transaction on Magnetics*. 2002; 38(3): 937-940.